

Ovary

There is a pair of ovaries, which are situated & attached by Peritoneum (Mesovarium) to the dorsal wall of the abdominal cavity behind the kidneys.

- Each ovary is about 2 cm. in size & is lobulated.
- Ovary is made up of connective tissue, the stroma which contains blood vessels, lymph vessels, & nerves.
- The ovary is covered by germinal epithelial tissue which forms oögonia after division.
- The oögonia project in to the stroma in form of oogonium tubes & finally separate in to the stroma as Graafian follicles.
- The young Graafian follicles is covered by a single layer of protective follicular cells.
- A mature Graafian follicles has an ovum which is surrounded by a mass of cells forming the discus proligerous.
- In the middle, there is a follicular cavity filled with liquor folliculi.
- The follicular cavity is lined by Membrana granulosa.
- Around the ovum a striated membrane is formed, which is known as zona pellucida or Corona radiata.
- Within this, zona pellucida lies the vitelline membrane.
- Each Graafian follicles is externally covered by a thin membrane made up of connective tissue.
- When the Graafian follicles mature they rupture and release the ova.
- After oöviducal discharge, the remaining follicular cells act as endocrine gland, known as Corpus luteum, which produces Progesterone hormone. This hormone influence Oöstrous Cycle & helps in the formation of Placenta.

- During Birth, the Corpus luteum produces another hormone, the Relaxin, which stimulates the widening of pelvic girdle. (Easy parturition)

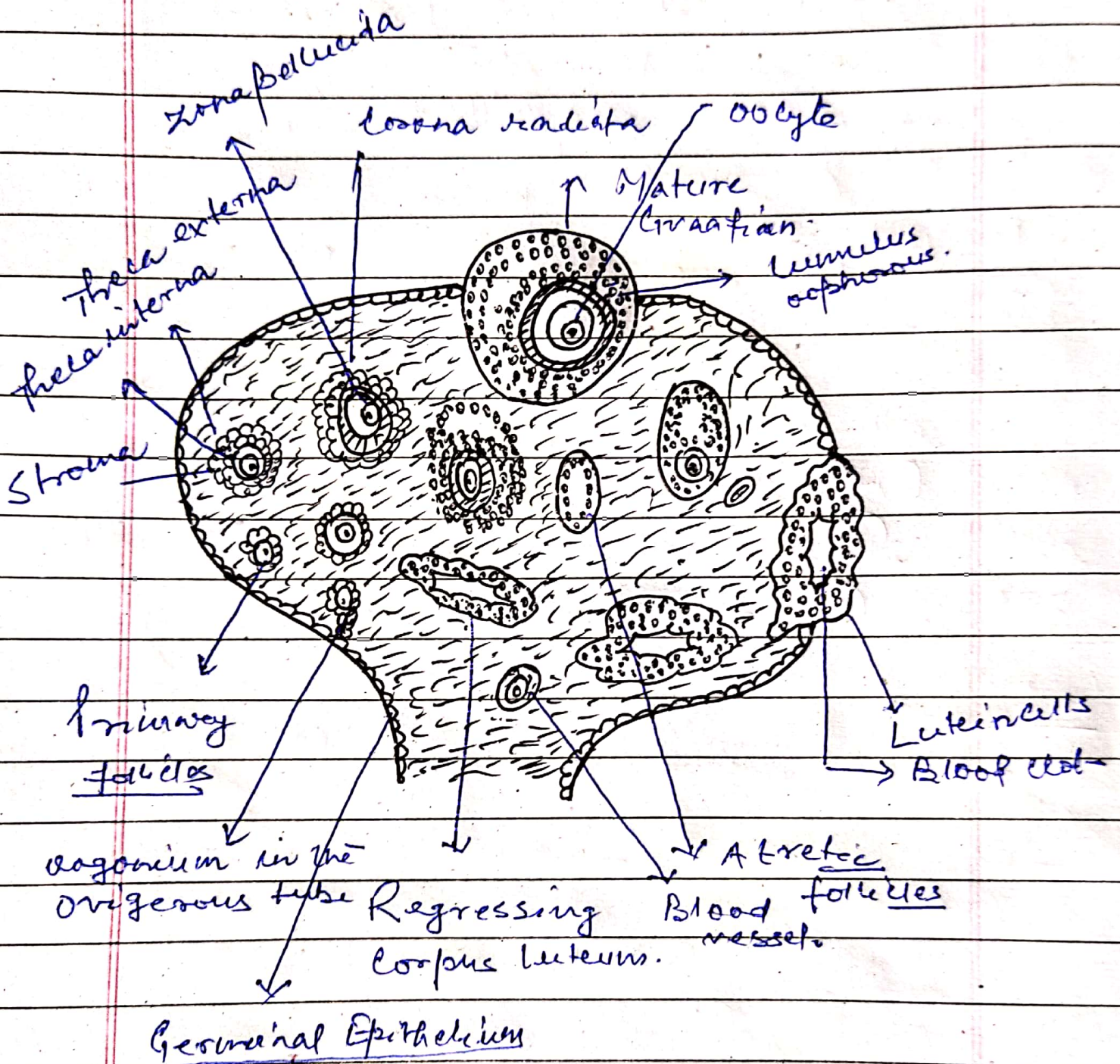


Fig - shows - T.S. of ovary (Mammal)